

SUN	MON	TUE	WED	THU	FRI	SAT
	STAY TUNED Child safety training this month					1
2 Special called business meeting after church for vote on personnel committee head Nursery: Melanie & Shannon	3 *Mary Contreras	4	5	6 *James Anzaldua *Alice Fernandez	7	8
9 Daylight Savings Time Nursery: Shannon & Christina	10 6:30 Church council meeting	11	12 6:00 Potluck meal 6:30 Regular church business meeting *Tyler Kutac	13	14	15
16 Lord's Supper *Alice Cockrell Nursery: Christina & Juana	17 ♥Nancy & Al Pena	18 Noon Prayer Meeting	19 *Lary Cockrell *James Hopkins	20	21	22
23 Nursery: Juana & Leah	24 *Joe Camacho	25	26 *Dot Shaw	27	28 ♥David & Judy James	29
30 Nursery: Leah & Lydia	31					*Birthdays ♥Anniversaries

**UNITED**  
Baptist Church News

One Body United in Christ

3102 Miori Ln  
Victoria, TX 77901  
361-573-9157  
Office.unitedbaptist@gmail.com  
www.ubcvictoria.org

**Regular Weekly Schedule & Events**

- Sundays**  
9:30 a.m. Bible Study  
10:45 a.m. Worship
- Wednesdays**  
3:00 p.m. Women's Discipleship  
6:00 p.m. Meal  
6:30 p.m. Bible Study
- Thursdays**  
9:00 a.m. Men's Discipleship
- Saturdays**  
10:00 a.m. Drive Up Prayer

# Connection Point

United Baptist Church ~ MARCH 2025

United as One Body in Christ



## Pastor's Corner

Dear Church,

Maybe it is corny, but as I was contemplating what to write and I realized it was already the month of March, I thought of the phrase "march on." This led me to Philippians 3:12-14. Here Paul talks about what it looks like to march on in this Christian life. For me personally and for our church as a whole, the end of last year and the beginning of this year have been quite a struggle. Yet we are called to march on. Notice, from these verses, some very important ideas when moving forward. First, moving forward comes with the recognition that we have somewhere to go. Paul says, "not that I have already obtained it." He saw that the goal was still ahead of him. In life, it is often tempting for us to lose sight of the goal. We may think that we are too far gone to have a goal. We may think that we have already achieved all that we can. Sometimes we become resigned to "that is just the way I am" and never give ourselves room to be shaped by God. Whatever the case, this verse reminds us that we have a goal to run toward. Secondly, Paul reminds us that we are to forget what is behind. This does not mean that we shouldn't learn from our mistakes. It means that our identity is not based on our past self. Thanks to Jesus, we have freedom from sin and the flesh. Every day is a new day to step forward in following Jesus. Our identity is rooted in Christ and what he has done for us. We just have to live within that identity. Lastly, these verses remind us that moving forward takes hard work. Here, Paul compares it to a race. Jesus compares it to a farmer plowing a field. Whatever analogy we use, the reality is that it takes intentional effort and hard work to move on toward the goal of knowing Christ fully and the power of his resurrection (Phil 3:10). So, my challenge to you this month is to March on. See the goal, leave the past behind, and put in the work to know Jesus deeper this month than you did last and to share him with others.

In Christ,  
Pastor Jeremy

Cell: 361-235-0513  
Email: [jeremy@ubcvictoria.org](mailto:jeremy@ubcvictoria.org)

**Connect with Us**

Address:  
3102 Miori Lane  
Victoria, TX 77901  
Phone:  
(361)573-9157  
Website: [www.ubcvictoria.org](http://www.ubcvictoria.org)  
Emails:  
[office.unitedbaptist@gmail.com](mailto:office.unitedbaptist@gmail.com)  
[Jeremy@ubcvictoria.org](mailto:Jeremy@ubcvictoria.org)  
[Pastormike83@yahoo.com](mailto:Pastormike83@yahoo.com)

**Join Us**

~ Sundays ~  
Bible Study 9:30  
Service 10:45 am  
Nursery provided  
~ Wednesdays ~  
Meal 6:00  
Bible Study 6:30  
~~~~~  
**Office Hours**  
Monday to Thursday  
9:00 am to Noon &  
1:00 pm to 4:30 pm  
Closed Fridays

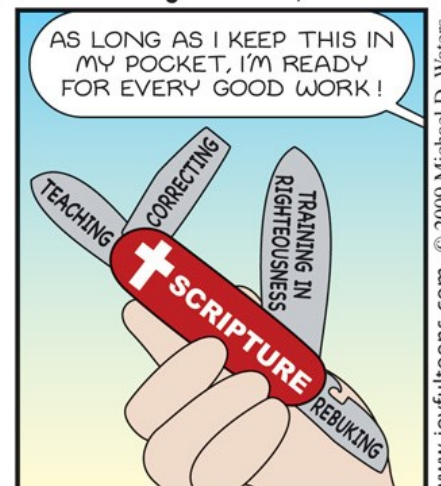
**Staff**

Pastor  
Jeremy Prichard  
Associate Pastor of  
Missions & Ministry  
Mike Garrett  
Music Leader  
James Anzaldua  
Secretary  
Melanie Elkins

**GOD'S ARMY KNIFE**



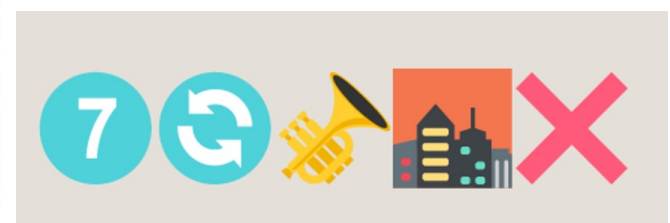
**A Joyful 'toon by Mike Waters**



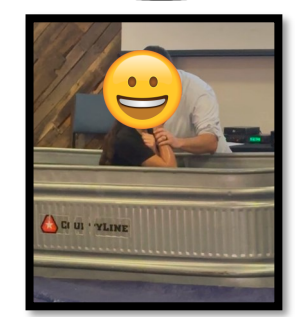
www.joyfultoons.com © 2009 Michael D. Waters

# Fun Times

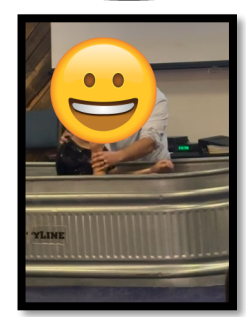
Guess the story of the Bible using the pictures/emojis



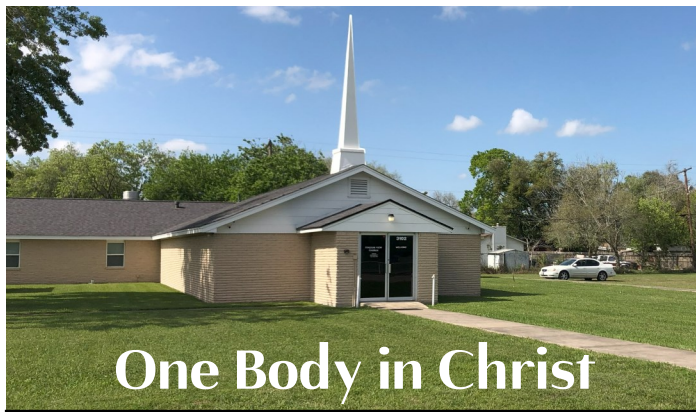
All Scripture is God-breathed and is useful for teaching, rebuking, correcting and training in righteousness, so that the man of God may be thoroughly equipped for every good work.  
— 2 TIMOTHY 3:16-17 NIV



Gabby and Tristan Anzaldua were baptized during the Agape celebration.







# One Body in Christ

## Upcoming Events

- Sunday, March 2**  
Special called business meeting following morning service (will be short)
  - Sunday, March 9**  
Daylight Saving Time Begins
  - Monday, March 10**  
6:30 Church council meeting
  - Wednesday, March 12**  
6:00 Potluck meal  
6:30 Regular business meeting
  - Sunday, March 16**  
The Lord's Supper in morning service
  - Tuesday, March 18**  
Noon prayer meeting
  - Saturday, March 29**  
Bobbi Ellinger Memorial Service
- Child Safety Training will be sometime this month!

## All About Us

**\*Membership for January\***  
Total Membership 91

**\*Average Attendance for January\***  
Worship : 49      Online : 12  
Sunday Bible Study : 29

**\*Financials for 2025\***  
Income: \$8,748      Expenses: \$13,828

**\*Financials for January\***  
Income: \$8,748      Expenses: \$13,828

A copy of monthly financials are available in the church office if you want a copy.



## Online Giving

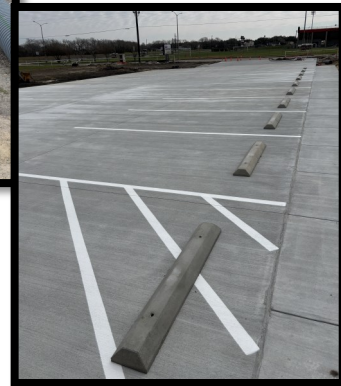
Give online at [www.ubcvictoria.org](http://www.ubcvictoria.org)  
OR using the QR code

## Construction Progress

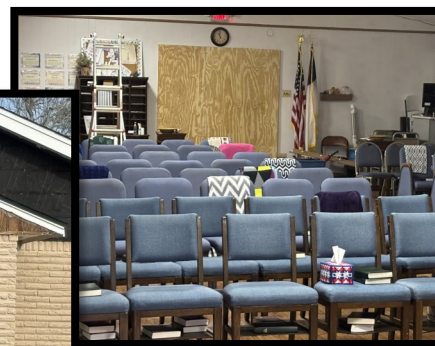
The east side entrance and side parking lot are OPEN! Construction on the front parking lot and building expansion is under way. While the front is in progress, we are using the side door to enter the church. The project is expected to be completed around Easter.



East end driveway



The 'old' entrance



Temporary 'new' entrance



## CHURCH NEWS

There was a potluck meal with a regular business meeting afterward Wednesday, January 15th. Approximately 23 members were present. We have two tentative events scheduled for May. A BBQ plate fundraiser possibly May 10th and feeding the STEM teachers on May 21st. Ladies Discipleship group time has moved from 1:30 on Wednesdays to 3:00. We now have 93 church members. For 2024, our Bible study attendance average was 29 and our average attendance for worship was 47. Church directories will be out sometime this month. You can get one by the door or the church office. Financially, we brought in more than anticipated. We had planned on \$100,000 in giving, but we actually received \$107,000. We spent exactly what we budgeted for. Financial reports will now show us how much we move from our investment fund to pay for our construction project as well as the total amount spent on the project to date. Our Agape celebration was moved from February 16th to February 9th when we plan to have some baptisms. We are looking for people to work in the nursery and teach a pre-school Sunday school class.

## STEM Cookies

The staff at STEM Middle School was very appreciative for the cookies we took them on Valentine's Day! We had over 200 cookies donated for them! Thank you to everyone who donated or helped out.



## THE GOSPEL ALPHABET

**O**pen my eyes, that I may see wondrous things from Your law.  
*Psalm 119:18*

## WORRY

To avoid worrying, we need a system of priorities: "Seek first the kingdom of God and His righteousness." We also need a strategic program: "Do not worry about tomorrow, for tomorrow will worry about its own things."

*Matthew 6:33-34*

## Strawberry Pretzel Salad

### Ingredients

- |                                                        |                                 |
|--------------------------------------------------------|---------------------------------|
| 2 cups crushed pretzels                                | 2 cups boiling water            |
| 1 cup 2 tablespoons sugar                              | 3/4 cup margarine, melted       |
| 8 oz package cream cheese                              | 1 carton (8 oz) whipped topping |
| 1 can (8 oz) crushed pineapple with juice              |                                 |
| 1 large package (6 oz) strawberry gelatin              |                                 |
| 2 packages (10 oz each) frozen strawberries with juice |                                 |

### Directions

Mix pretzels and 2 tablespoons sugar. Add melted margarine. Press into a 9x12 inch pan. Bake at 400° for 7 minutes; cool. Have cream cheese and whipped topping at room temperature. Cream them together and mix in one cup sugar. Pour over cooled pretzel crust, making sure the mixture goes to all the edges; cool. Dissolve gelatin in boiling water. Add strawberries and pineapple.; chill until thick. Pour over cream cheese mixture. Place in refrigerator until ready to serve.

From Judy James



## BIG FISHERMAN

LeRoy Davis shows off his catch of the day when David James took him fishing!

**Emoji Bible Story Answer: The Fall of Jericho Joshua 5:13-6:21**